





We are proud to market this beautiful “Victorian” style villa-palace located in one of the best districts of Orihuela.

This fabulous home stands out for its architecture, both exterior and interior space, distribution, finishes and, above all, elegance. A unique villa of its category that will give its future owners a home with a spectacular and unique design.

The villa was designed in 2009 by a prestigious architect of the region specialized in this type of architecture.

Its interior finishes and distribution replicate the design of Victorian mansions of the 19th century, characterized by being a mix of styles architectural. This style is famous for being a romantic and gothic mix in addition to having an influence of the Middle East and Asia.

A great example of this is the Palace of Westminster in London.

The exterior gardens take us to the corners of the secrets of the Alhambra gardens.

Each tree has been planted with the idea of maintaining. The most intimate and precious thing in the right place.

The walk through these makes you feel a Ying and Yang and the harmony in its design, accompanied with nature that surrounds the villa transmits tranquillity. Without ever leave aside security or privacy.









This beautiful villa-palace stands proud on its large plot of 4100 m2.

A plot carefully designed to take advantage of every square meter of it. Once We go through the double entrance gate. We find the villa in front along with two fountains welcoming us to our home.

To our right we will find two hundred-year-old olive trees in addition to a bonsai and several other trees of various varieties.

Without moving, if we look at the entrance to the main building we can assess how each meter of this has been carefully calculated, an example of this is the keep the main garden area on the east side of the property so that the entrance to the parking underground, on the west side, would not break the vision of the style and beauty of what characterizes the architecture of this villa.





Without entering the property, we can pay attention to the built, and observe how each window, every gate and every brick has been placed with care, love and always using marbles carefully carved.

Once we have passed the four cypresses that majestically give shade to such a precious construction we will be welcomed by a garden replicating the dream of the Alhambra, for many the red one, for others a romantic place, a place of princes and princesses.





From the same fountain we can continue walking and we will reach “the forest”, a corner of this villa designed to feel between nature and enjoy, sitting on a family bench full of anecdotes and memoirs, along with a good wine or an even better book.



In this area a small plantation of various trees could not be missing. more, on this occasion, evergreen.

Once in the forest, we will be amazed, pardon the redundancy, of the beauty of our home.



From this angle we will have a new perspective of this discovering a new face, the southern part of the property where. It has a beautiful large terrace with views of the pool.

The swimming pool, surrounded by grass, offers a ideal size for a home these characteristics and also shares space with a nice jacuzzi to relax after a long day of job.

Around this we have a space reserved to be able to put the sunbeds and in this way not to damage the grass.











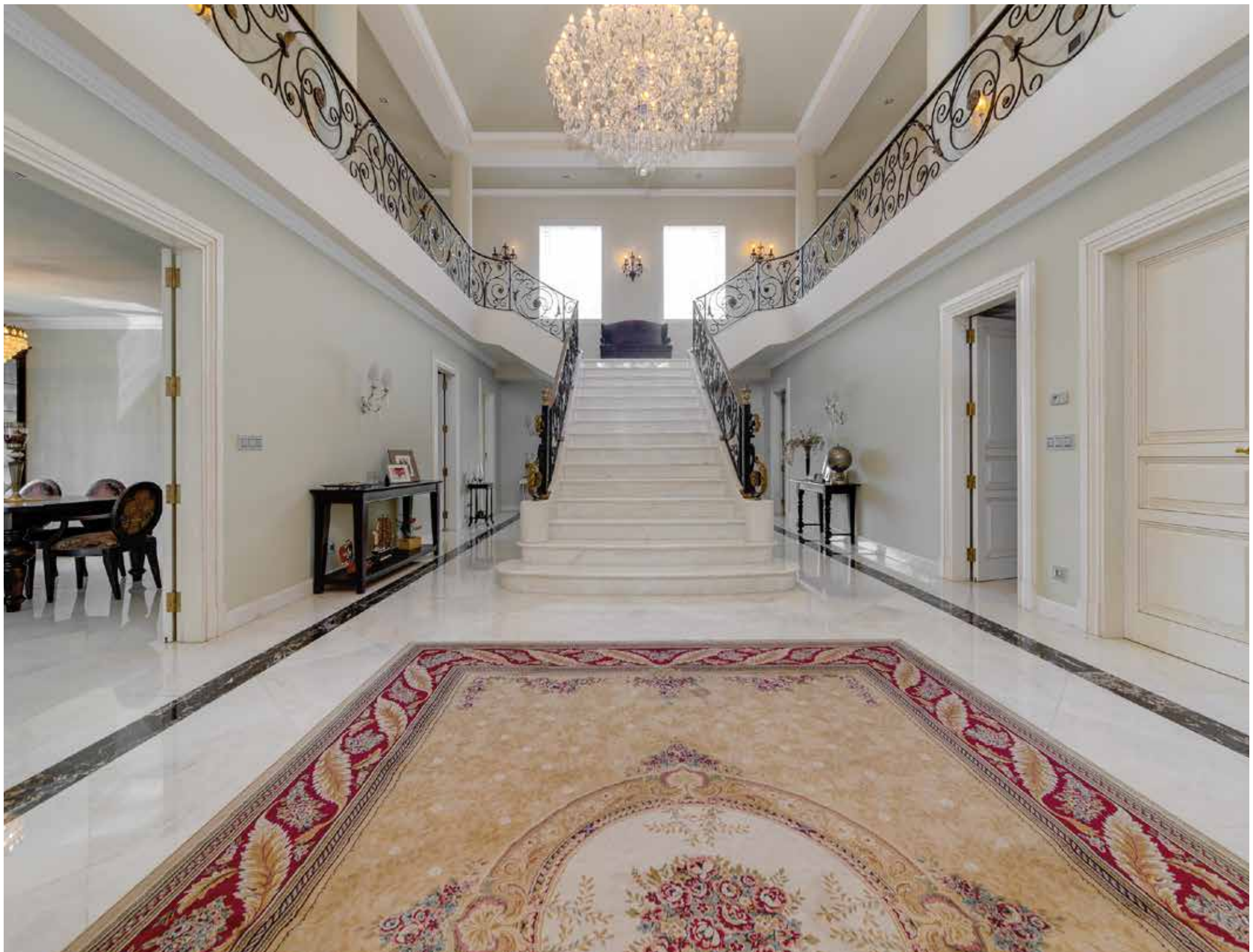
In the west corner is located a complete barbecue with all the comforts we can find in a kitchen conventional, in addition to a fantastic wood oven, in this same area we will enjoy enough space to organize lunches or dinners with our friends and family.

In the back of the kitchen summer we also have a small auxiliary toilet with shower.

Other important features to take into account from the outside are the perimeter alarm and video surveillance that has been installed the home as well as the automatic irrigation of your gardens with a unique drainage system that takes advantage of the river waters and underground to avoid the use of drinking water from the network and so on contribute against the impact environmental.











If by walking around the exterior of the villa we could admire the grandeur, attention to detail and care when designing the distribution, once we have opened the solid wood gates, finished with the same care that the rest of the house, the first thought that will come to us. The head will be the scene from the iconic movie "Gone with the Wind."

This grand staircase inspires grandeur, elegance, as well as a classic touch of the time.



It is illuminated by an impressive chandelier that hangs, impeccable, on the roof of it. Two leaded stained glass windows, next to the stairs, they provide ideal lighting to the entire room.

The house is spread over two floors, which in turn is divided into two at. The East Wing and the West Wing.





# EAST WING





# Living room

This has been divided into three parts;

A dining area with a large table for eight diners, at your left, right in the center of the room a small reading area next to a beautiful carved fireplace hand and at the back of the room several U-shaped armchairs facing the TV.









# Library

Adjacent to the living room, we have a large office with practical shelves and good light to work comfortably or use as a study room.





# Guest Bedroom

A practical stay for your guests so they can rest comfortably in a large room with full bathroom.





# WEST WING





# Kitchen Dining room

Obviously we couldn't disappoint in one of the most important rooms of the home for many.

In the center of the kitchen we have a large peninsula in matte Zimbabwe Black granite it gives us breadth and a great space to be able work on it.

The distribution is practical by allowing us to have the kitchen divided into two parts, on the one hand, the work area and on the other the dining area, both in a single environment that encourages the family atmosphere.









# Laundry rom

Next to the kitchen is located the laundry area with a great feature:

A good storage room that services the Kitchen.

In this room we can conveniently clean and organize clothes.





# Auxiliary toilet

The house could not skimp on details and, of course, of comforts.

This toilet is designed for provide service to the plant and It has a toilet and shower.





# THE UPPER FLOOR

On the upper floor, we will find the four main bedrooms that the home offers, without counting the what we have on the main floor which is mainly intended for guests.

The approach of these four bedrooms has been above all to have space in the rooms, practicality and let them be a corner of the house where one can relax and have their own privacy without leaving the bedroom.











**Master Bedroom:** It offers us extraordinary spaciousness and a 12 m2 dressing room designed for the most demanding couples. The bathroom, with separate shower and whirlpool bathtub delights us with its marble walls placed in a single piece to preserve harmony and beauty that this material looks.







**Guest Bedrooms:** On this floor we can also find a second guest bedroom with a full bathroom.







**Third Bedroom:** Like the master bedroom, this third bedroom offers, above all, great spaciousness, 27 m2 of living space, along with access to the main terraces of the house with excellent views of the Orihuela mountain. It also offers a practical dressing room and full bathroom with shower.







**Forth Bedroom:** This last bedroom is similar in size to the third, with the peculiarity that it could be joined to a small room that serves the 7m2 floor. Like every bedroom in the family, we have a full bathroom and our own dressing room.





# LOWER FLOOR

The basement has access direct from the villa also as for the entrance for cars.

We will find it distributed in several rooms that, one once again, it will offer various activities to their owners.





**Gym:** The gym offers spaciousness being a room rectangular of eighty square meters.

In it we can find various machines so that we can practice all kinds of activities that we could find in any public gym.



**Sauna/Spa:** Although it is not in working, this room is completely prepared to be used as a SPA.



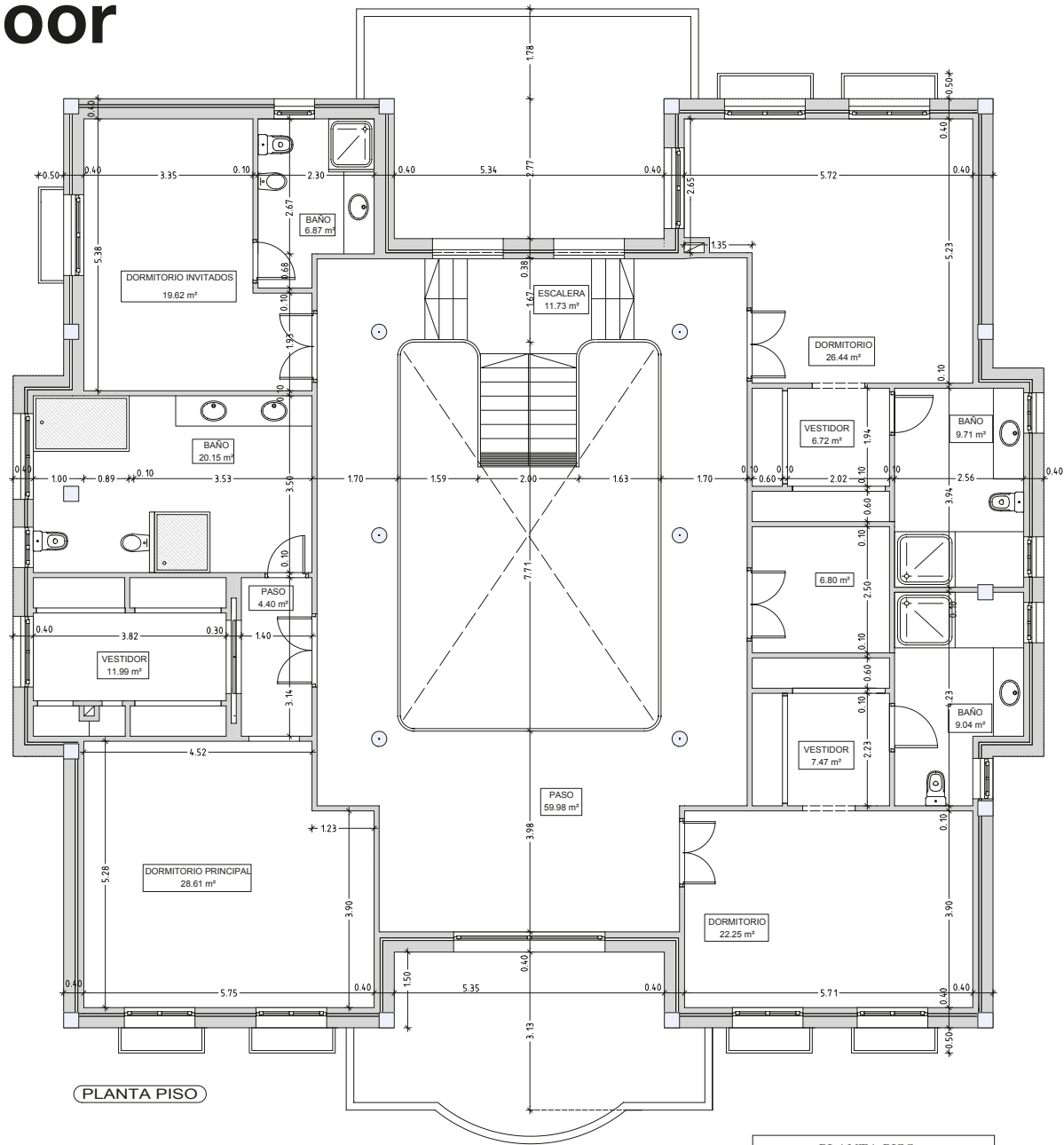
**Parking:** The size of the parking lot is ideal, we must take into account that we can park up to five vehicles in it.

We have a large garage where we can easily fit up to five vehicles, a gymnasium with various machines of eighty square meters, an additional room that is prepared to become a sauna and a beautiful wine cellar decorated in the style of a medieval tavern with room independent.





# Ground floor



PLANTA PISO	
SUPERFICIE UTIL	251,78 m2.
SUPERFICIE CONSTRUIDA	331,21 m2.

TOTAL	
SUPERFICIE UTIL	867,89 m2.
SUPERFICIE CONSTRUIDA	1.020,46 m2.



**The Winery:** A winery at home is more than just a collection of bottles; It's a place to explore and celebrate wine.

Organize private tastings with friends and family, discover new strains and vintages, or simply immerse yourself in the beauty of your favorite wines in the peace of mind of your home.









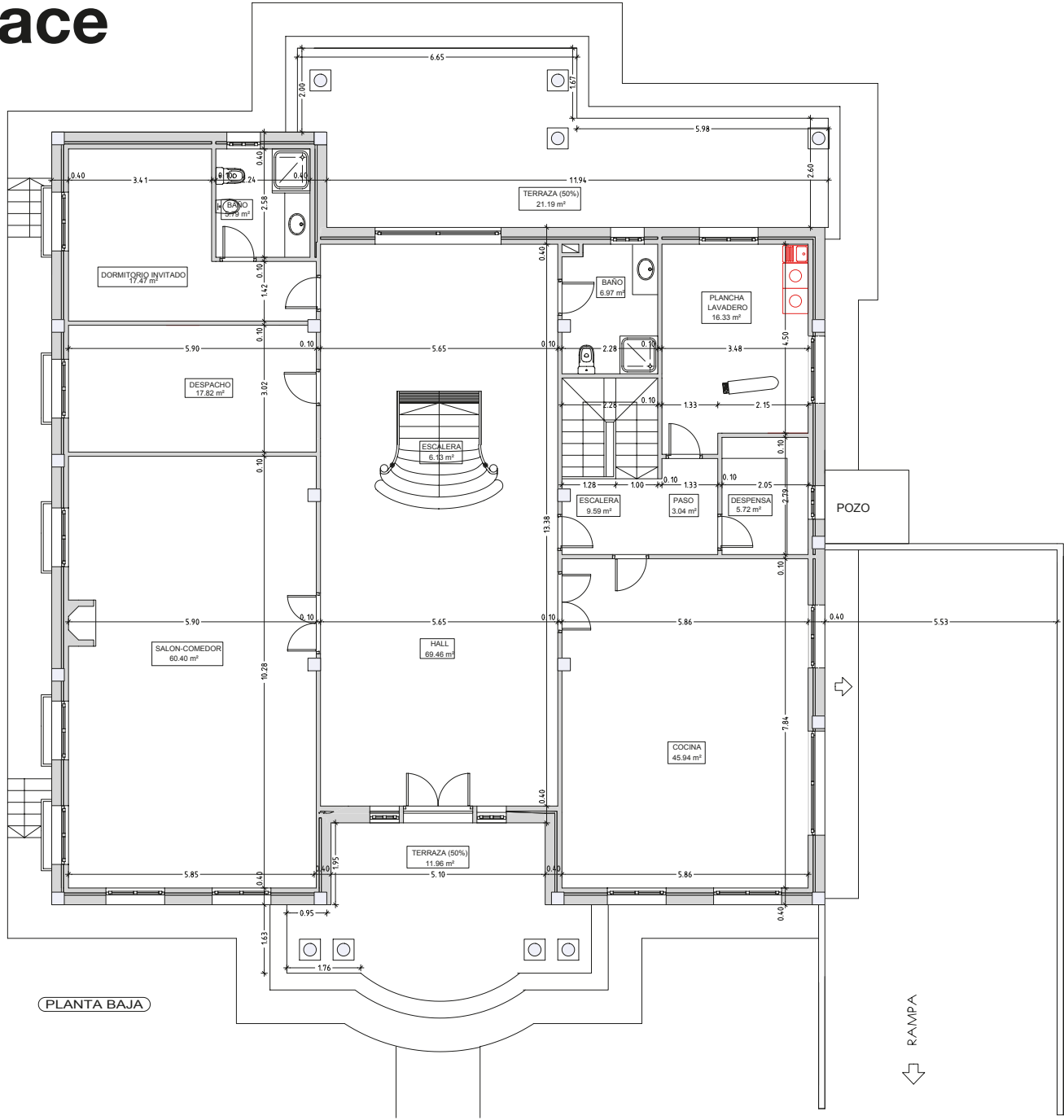


In addition to the spaciousness, style, quality and details hidden in the property, this palace villa has home automation that will allow you from control the ambient temperature of each room such as accesses, irrigation and lights. It also has a video security system with own surveillance with perimeter system.



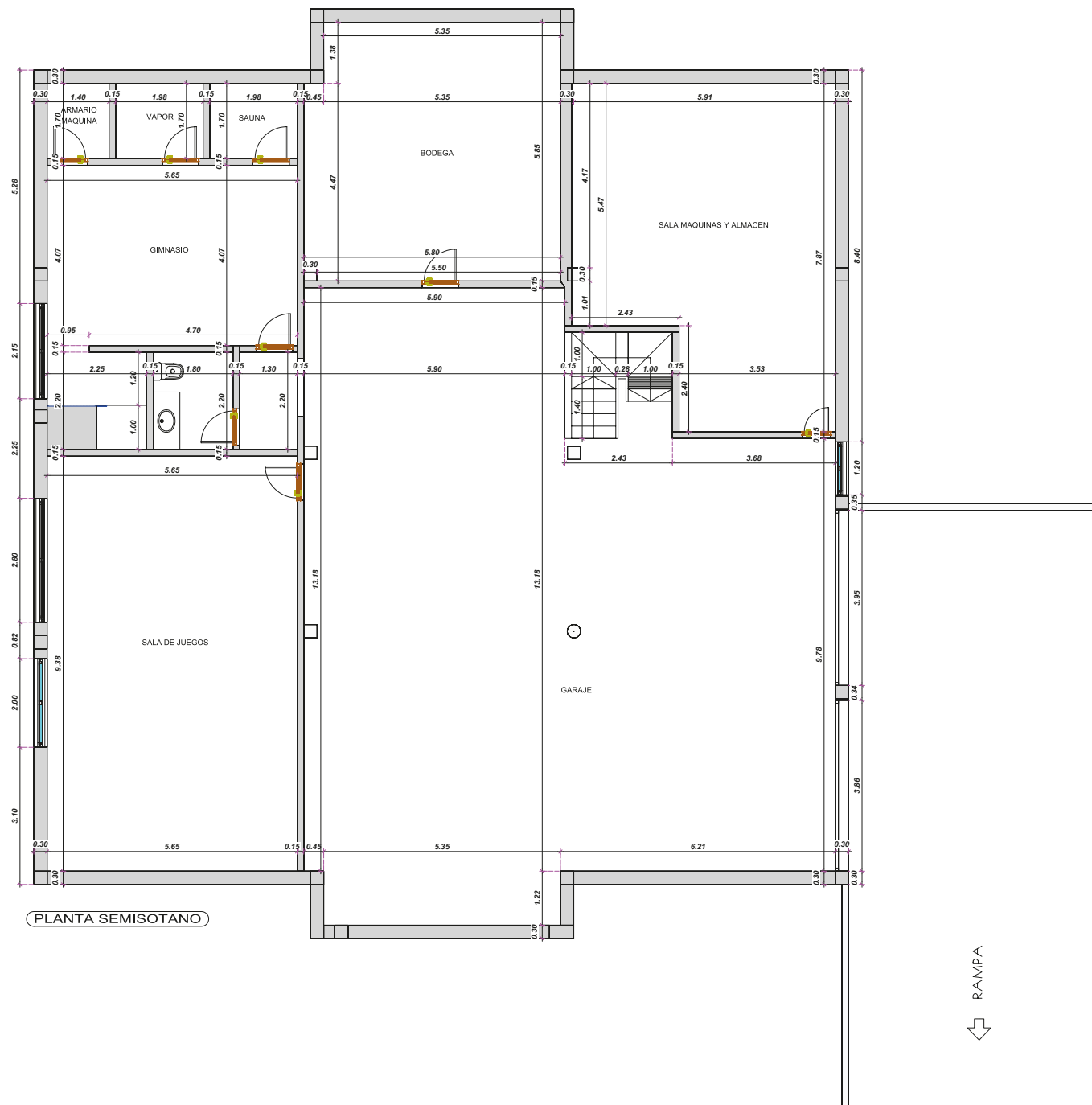


# Ground Floor and Fireplace



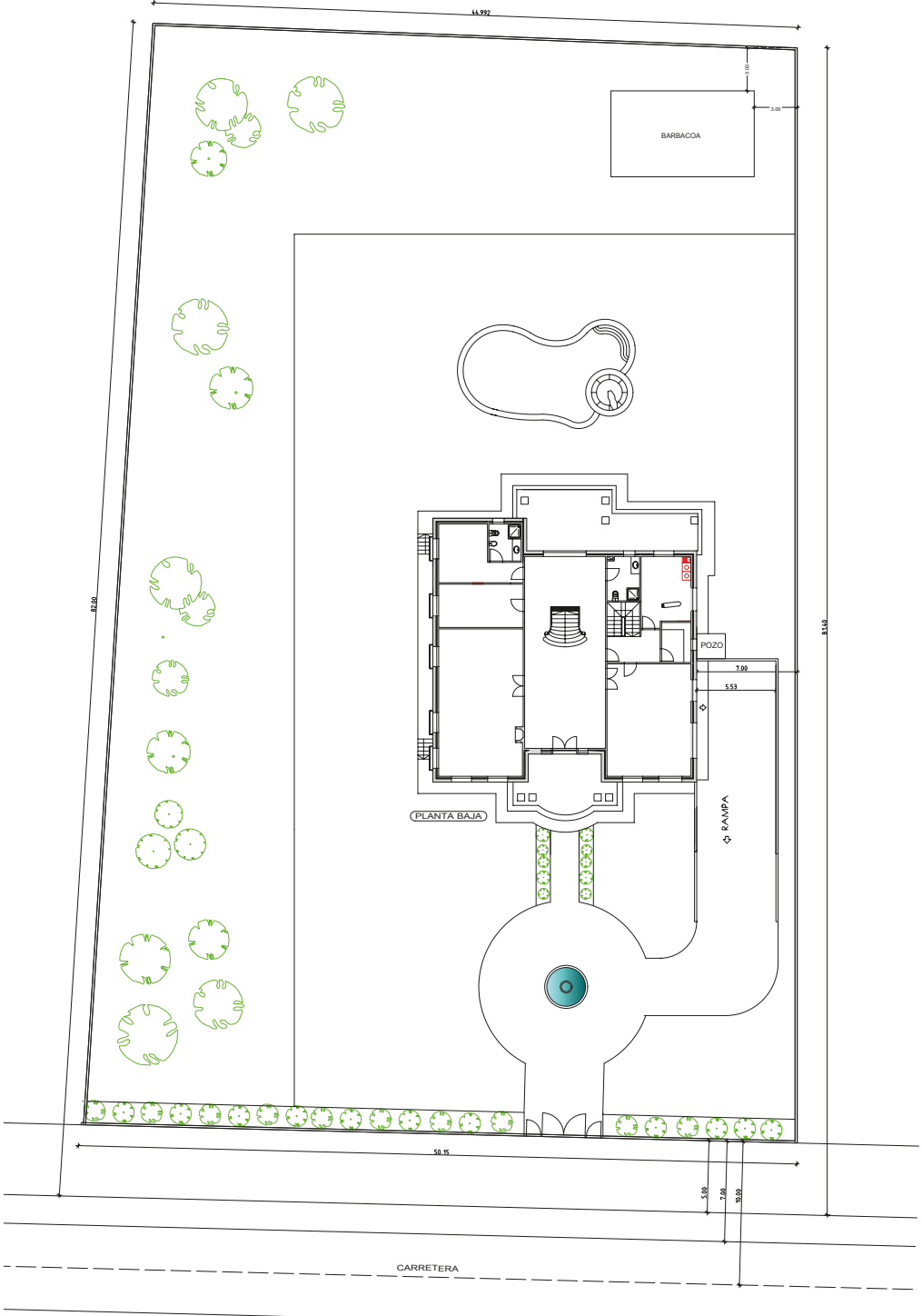


# Basement





# Pool and BBQ







**mayrasa**  
REAL ESTATE AGENCE IMMOBILIÈRE

C.C. Flamenca Beach, Local 113, C/ Niágara, 62 · 03189 Orihuela Costa (Alicante)

☎ +34 966 263 013 · [mayrasa@mayrasa.com](mailto:mayrasa@mayrasa.com) · [www.mayrasa.com](http://www.mayrasa.com)